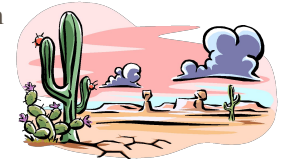


Biomes

A biome is one of Earth's large ecosystems, with its own kind of climate, soil, plants, and animals.

Six major biomes

- Taiga
- Deciduous forest
- Tropical rain forest
- Desert
- Tundra
- Grassland



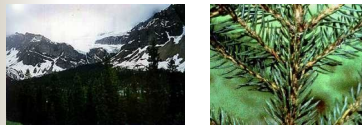
Taiga

- A cool forest biome of conifers in the upper Northern Hemisphere
- Located in the mid to high latitudes



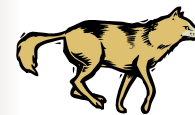
Taiga climate and soil

- Very cold winters, cool summers; about 50 cm of precipitation a year.
- Acidic, mineral poor soil with lots of pine and spruce needles on top.



Animals of the Taiga

- Rodents, snowshoe hares, lynx, sables, ermine, caribou, bears, wolves, birds in summer



Plants of the Taiga

- Mostly spruce, fir and other evergreen trees.



Deciduous Forest

- A forest biome with many kinds of trees that lose their leaves each autumn
- Located in the mid latitudes



Deciduous forest

- Relatively mild summers and cold winters.
- About 76-127 cm of precipitation each year.
- Rich topsoil over clay.
- Relatively undisturbed by human activity



Animals of the Deciduous Forest

- Wolves, deer, bears, and a wide variety of small mammals, birds, amphibians, reptiles, and insects



Plants of the deciduous forest

- Hardwoods such as oaks, beeches, hickories and maples



Tropical Rain Forest

- A hot, humid biome near the equator, with much rainfall and a wide variety of life
- Located near the equator



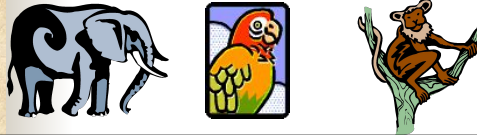
Tropical rain forest

- Hot all year round.
- 200-400 cm of precipitation
- Nutrient poor soil
- Most productive and diverse biome



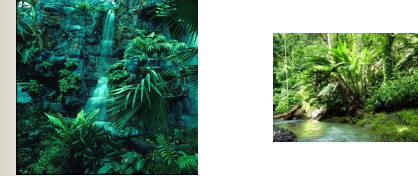
Animals of the Tropical Rain Forest

- More species of insects, reptiles, and amphibians than any place else; monkeys, other small and large mammals, including in some places elephants, all sorts of colorful birds



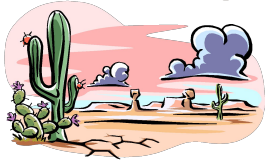
Plants of Tropical Rainforest

- Greatest diversity of any biome
- Vines, orchids, ferns, lots of trees



Desert

- A sandy or rocky biome, with little precipitation and little plant life
- Midlatitudes—or near the equator



Desert

- Generally very hot days and cold nights
- Less than 10 inches of precipitation each year
- Poor in animal and plant decay products but often rich in minerals



Animals of the Desert

- Rodents, snakes, lizards, tortoises, insects, and some birds. The Sahara Desert in Africa is home to camels, gazelles, antelopes, small foxes, snakes, lizards, and gerbils



Plants of the desert

- Cacti, yuccas, bunch grasses, shrubs, and a few trees



Tundra

- A cold biome of the far north; the ground is frozen even in summer
- High northern latitudes

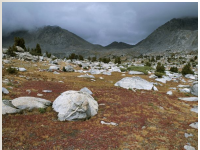


Tundra

- Very cold, harsh and long winters
- Short and cool summers
- 4-10 inches of rain
- Poor soil; permafrost a few inches down

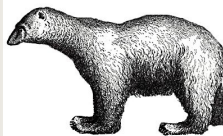
Plants of the tundra

- Grasses, wildflowers, mosses, small shrubs



Animals of the Tundra

- Musk oxen, migrating caribou, arctic foxes, weasels, snowshoe hares, owls, hawks, various rodents, occasional polar bear.



Grassland

- A biome where grasses, not trees, are the main plant life. Prairies are one kind of grassland region.
- Mid latitudes, interiors of continents



Grassland

- Cool in winter
- Hot in the summer
- 25-72 cm of precipitation each year
- Rich topsoil

Plants in the grassland

- Mostly grasses and small shrubs
- Some trees near water



Grassland animals

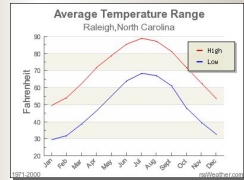
American Grasslands

- American Grasslands: Prairie dogs, foxes, small mammals, snakes, insects, various birds

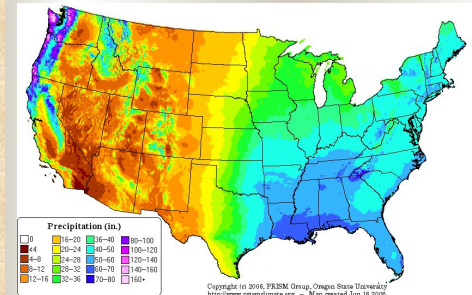
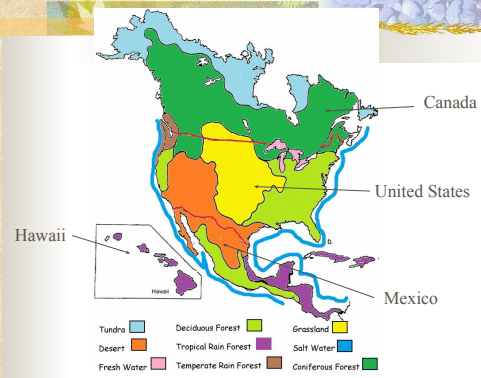
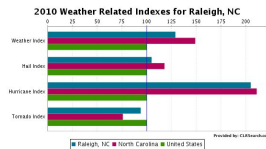


African Grasslands

- African Grasslands: Elephants, lions, zebras, giraffes



Average annual temperature: 59.3 F
Average precipitation: 41 inches of rain



Copyright (c) 2016, PBS/NM Univ., Oregon State University
<http://www.pbsnmonline.org> - Map revised Jan 18, 2016