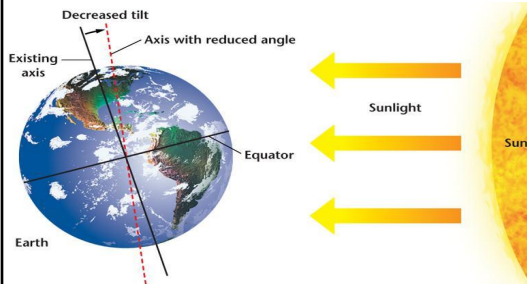


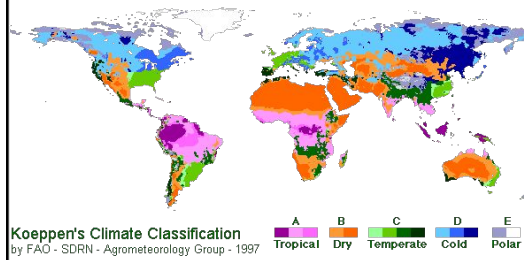
Koepfen Classification System

Ch 21.2-21.4



Koepfen Classification System

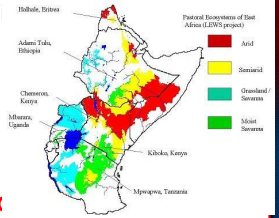
- Average **monthly** & **annual temp, precip,** and **vegetation** to classify climates



Climate Classification

Koepfen Classification System

- Contains **six** main d
 - **Tropical**
 - **Dry**
 - **Mild**
 - **Continental**
 - **Polar**
 - **High Elevatic**



Koepfen Classification System

TROPICAL Climates

- Constant **high temp** and **humid** conditions



Koepfen Classification System

DRY/ARID Climates

- Covers **~30%** land area & **largest** climatic zone



Koepfen Classification System

MILD Climates

- **Three (3)** subtypes:

- **Humid Subtropical**
- **Marine West Coast**
- **Mediterranean**



Koepfen Classification System

CONTINENTAL Climates



- Three (3) subtypes:
 - **Warm Summers**
 - **Cool Summers**
 - **Subarctic**

Koepfen Classification System

POLAR Climates

- **Coldest** regions
- Average temp of **warmest** month is **<10°C**

